

Chorley
Council

Planning
Committee Meeting

14 November 2023



Item 3c

23/00402/FULMAJ

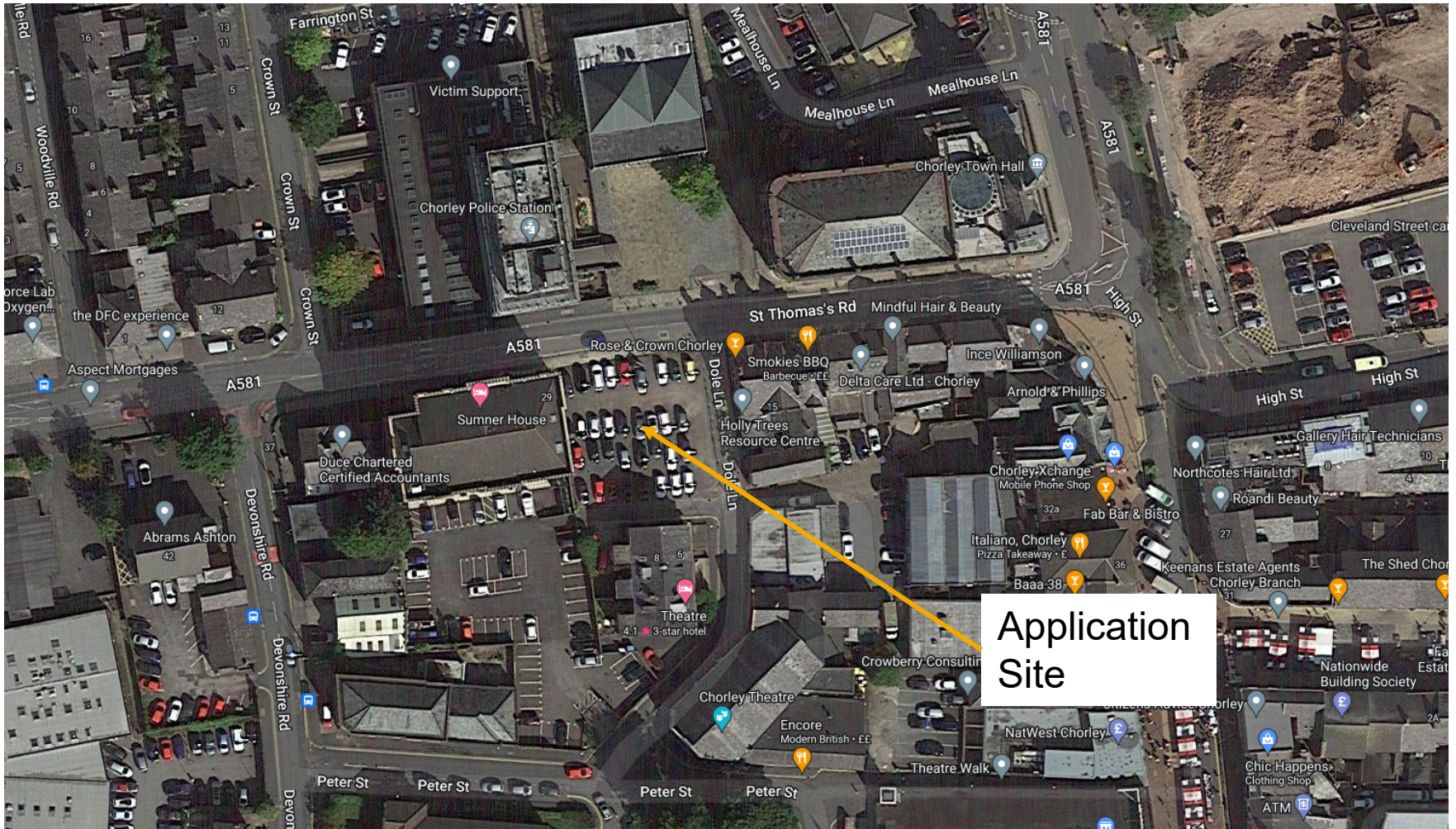
Land To The East Of Sumner House, Dole Lane
Chorley

Erection of five storey building comprising 24no. apartments (Class C3) with ancillary accommodation including refuse and cycle storage, plant rooms and enclosures, and car parking

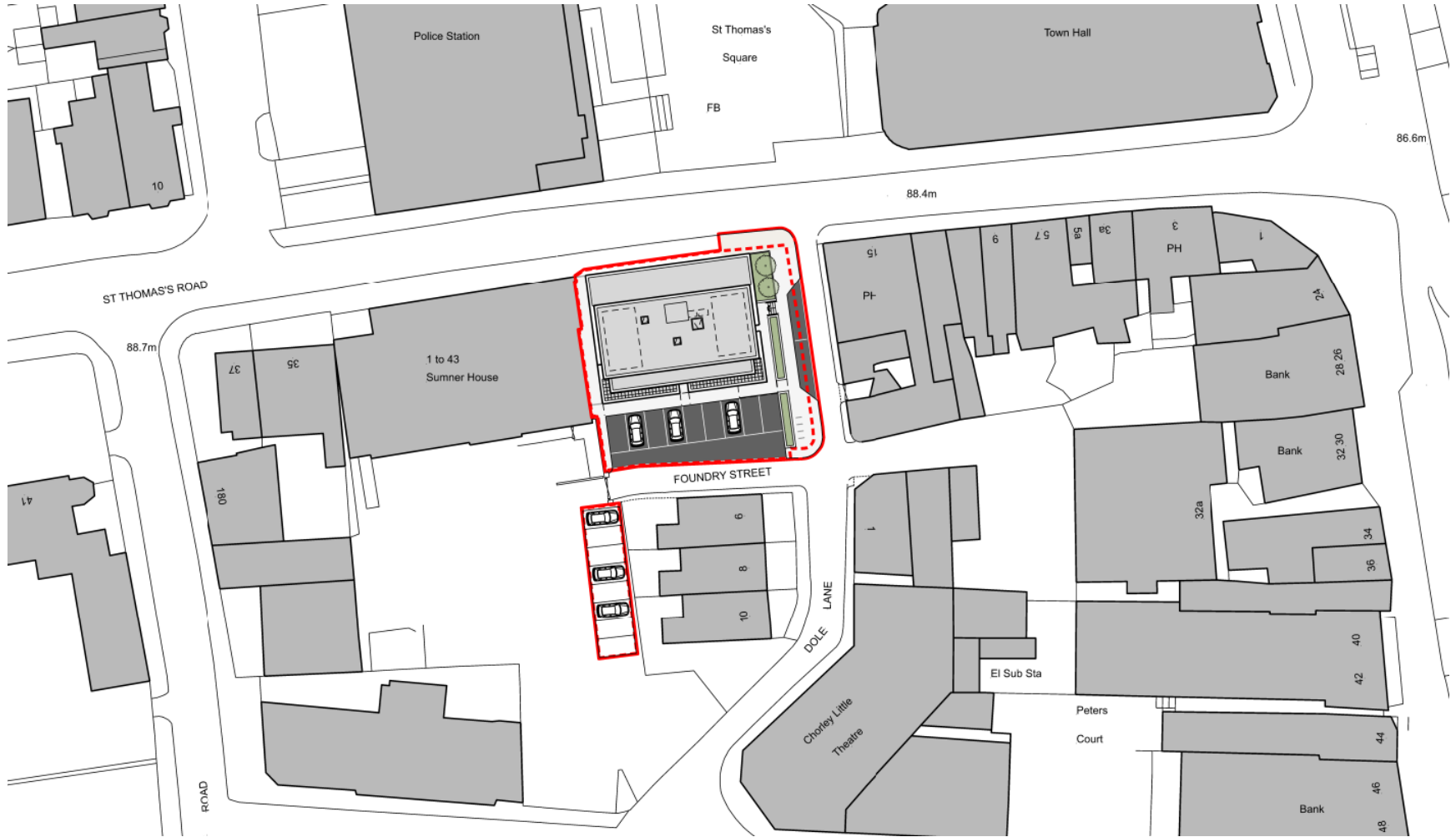
Location plan



Aerial photo



Site Plan



Visualisation



Visulisation



North (front) elevation



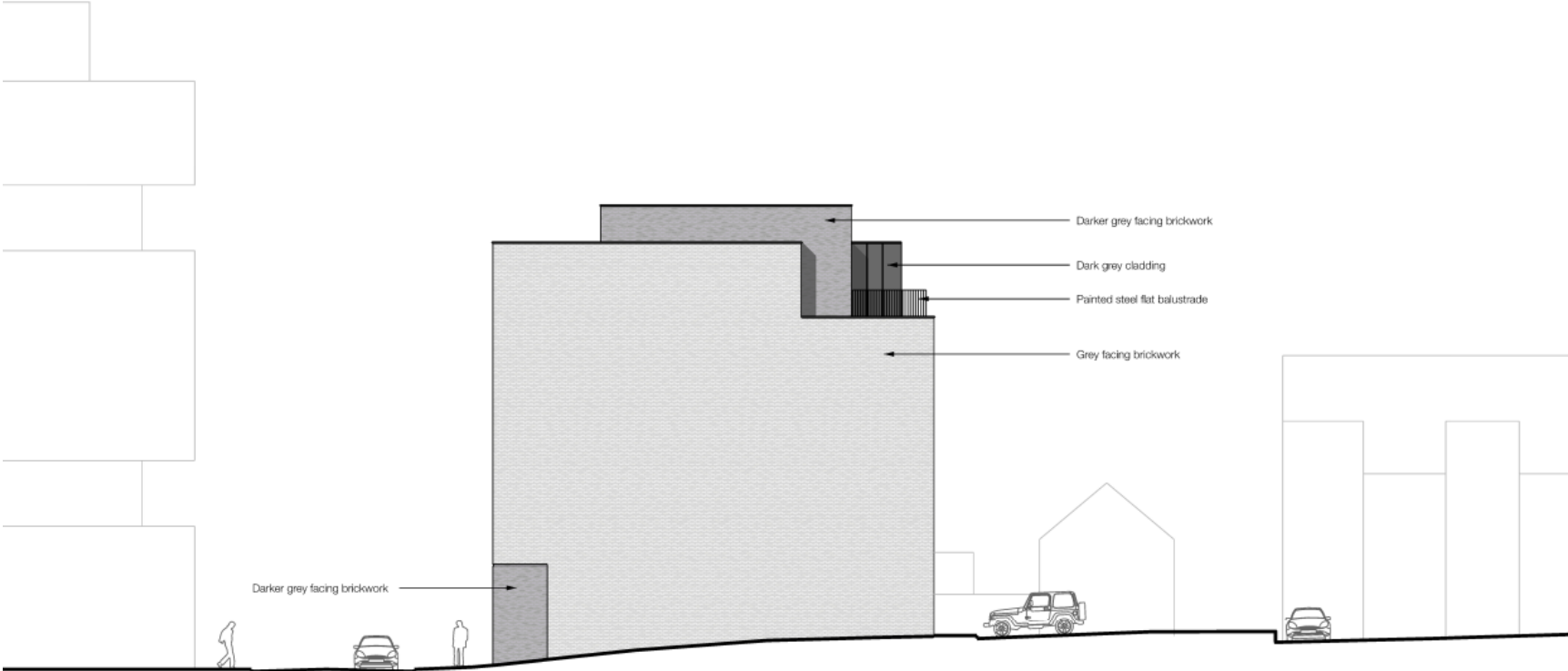
Southern elevation



East side elevation



West side elevation



Ground floor and site plan



Application site



Site frontage



Site photo



Site photo



St Thomas's Road



St Thomas's Road

